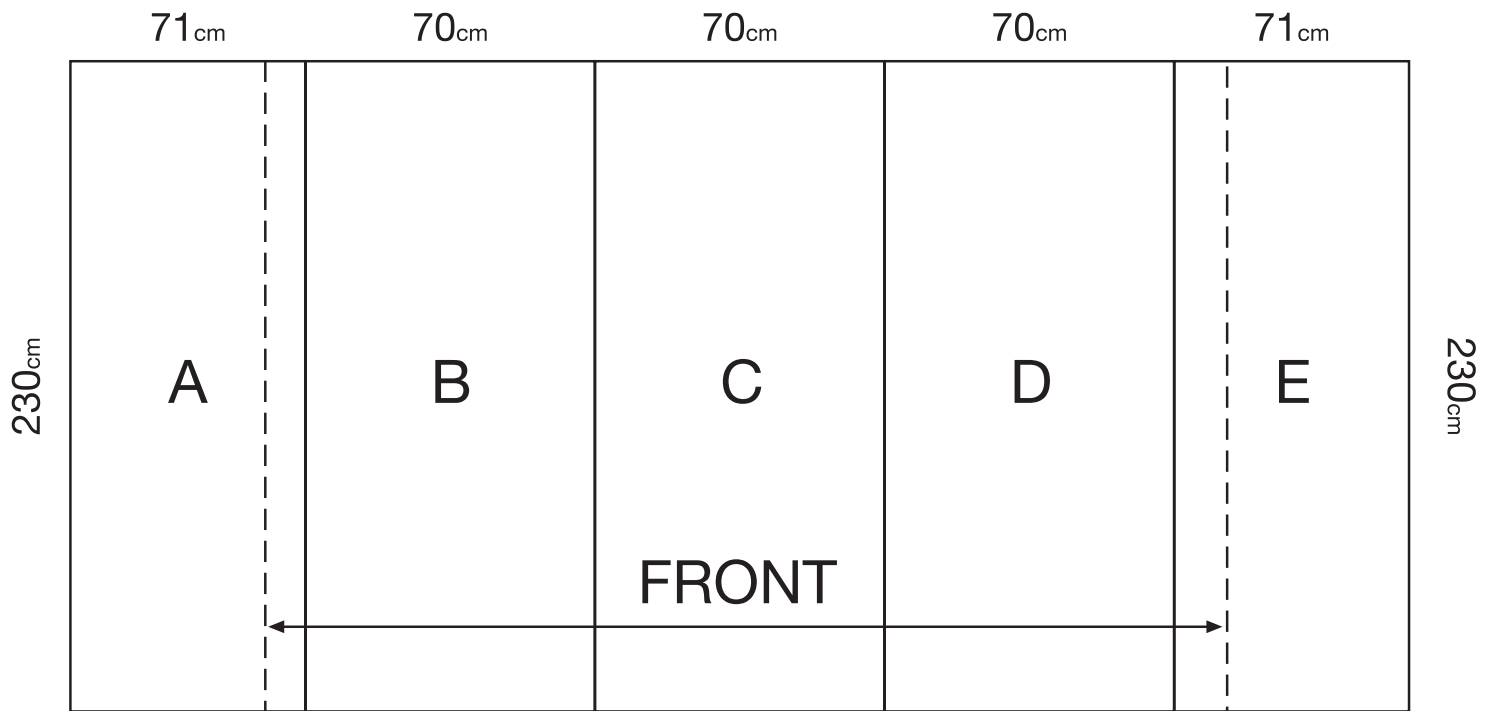


# Pop up display 3x3 352<sub>cm</sub> x 230<sub>cm</sub>



## Preparing artwork:

custom: 352x230 c"m or proportional, bleed: 1 c"m Nett dimens 350x228.

The graphic layout is prepared as 1 piece!

and is divided into 5 panels (3 central and 2 side panels) during the printing process.

For the graphic layout, prepare first a grid, where guides mark the bleed and panels division. Important graphics should be placed on the 3 central panels. The 2 side panels are only partly visible (when viewed from the front). The graphics background should exceed into the bleed area.

it is advisable not to have letters placed on the dividing lines (between panels), but to have them placed (if possible) on either side.

we can accept artwork in the following formats:

Adobe Illustrator cs (ai)

Adobe Acrobat (pdf press quality)

Adobe Photoshop (eps)

## Upload your artwork:

You can send your artwork via a free file transfer.

Upload your file in this link:

<http://dropbox.yousendit.com/rollup4pop>